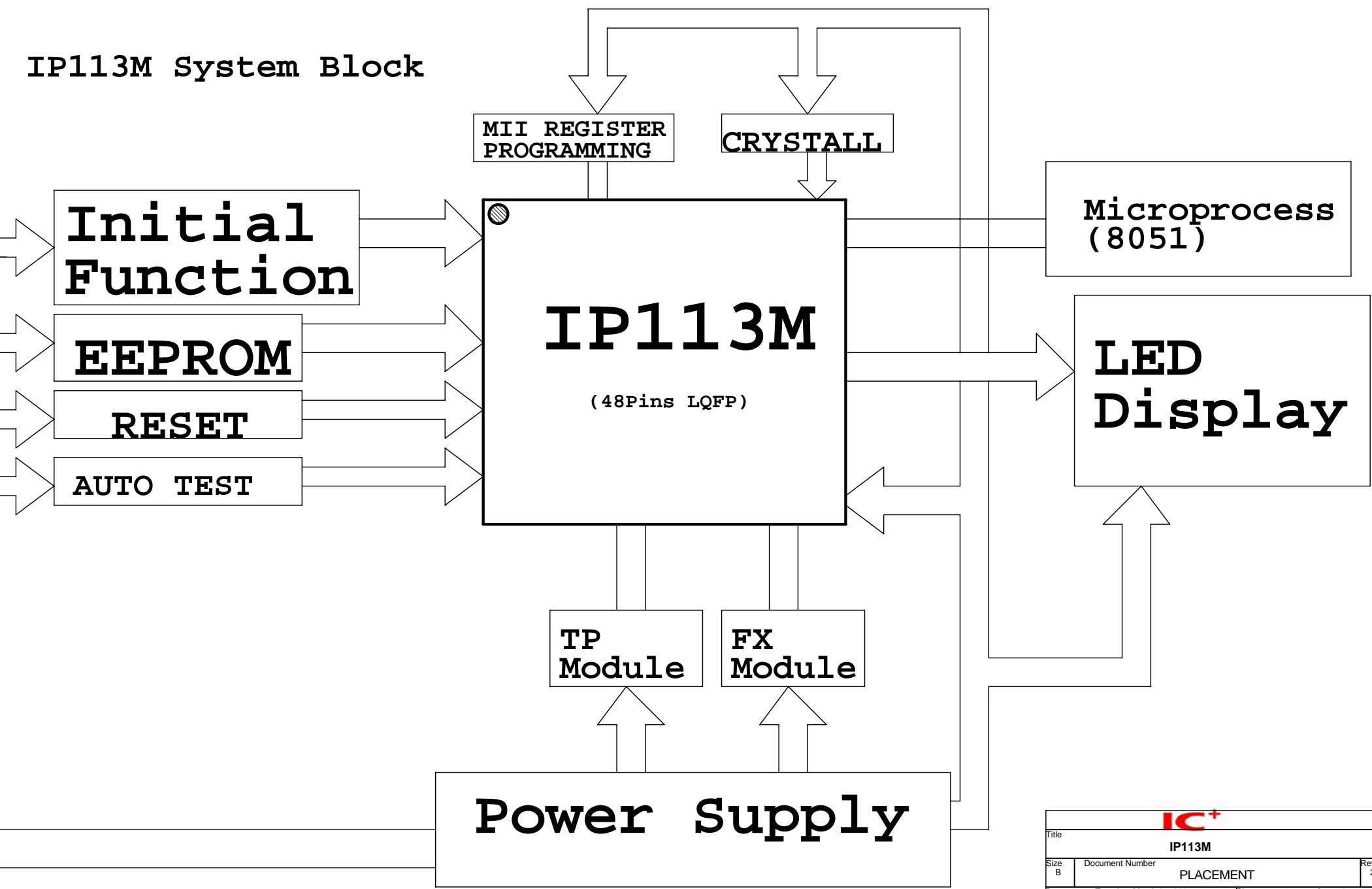
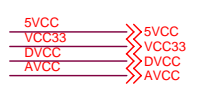
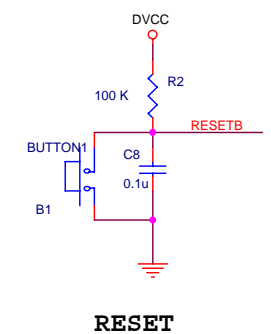
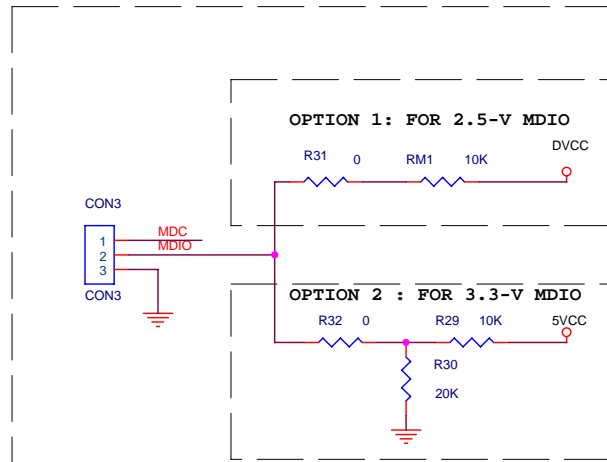
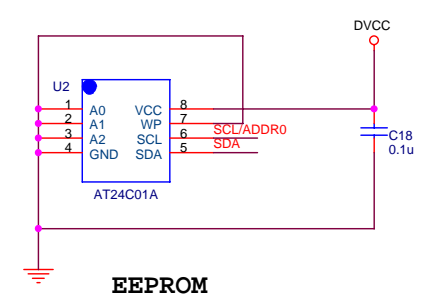
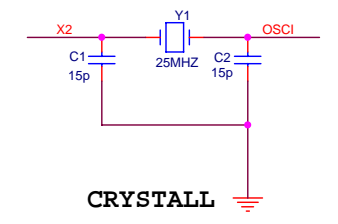
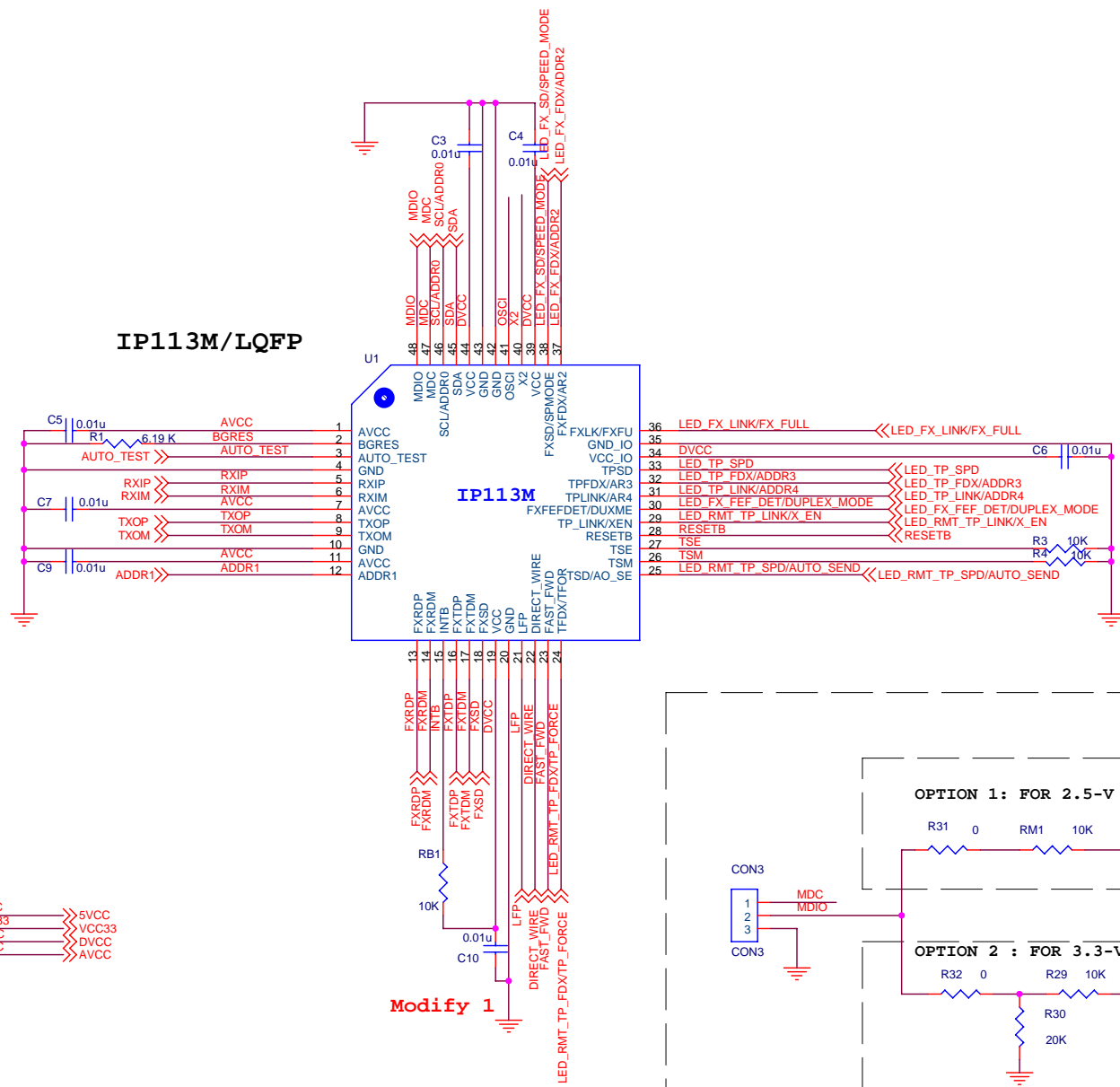
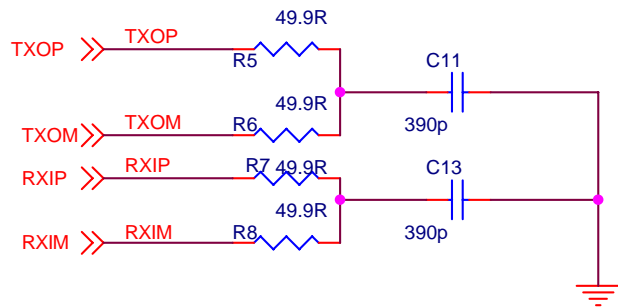


# IP113M System Block

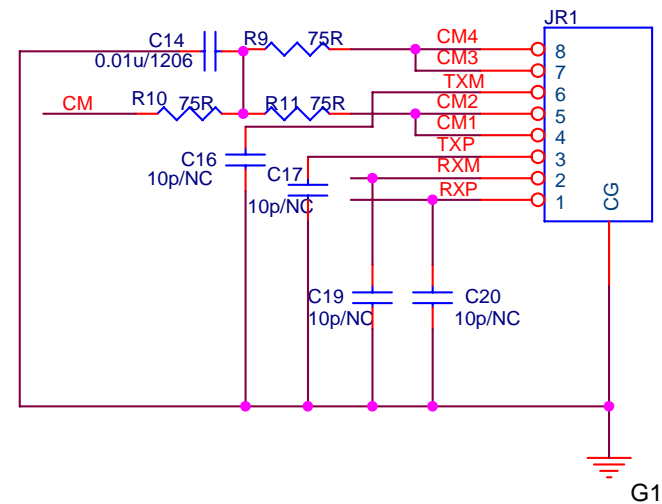


Title <b>IP113M</b>		
Size B	Document Number <b>PLACEMENT</b>	Rev 2
Date: Tuesday, March 27, 2007	Sheet 1	of 8

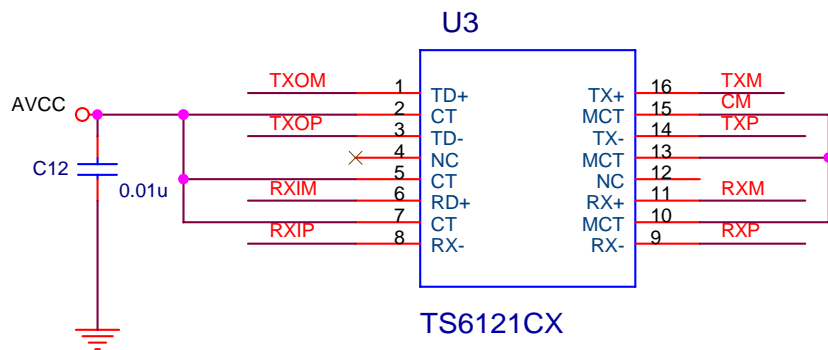




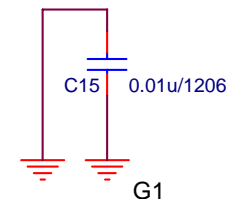
**TRANSFORMER**



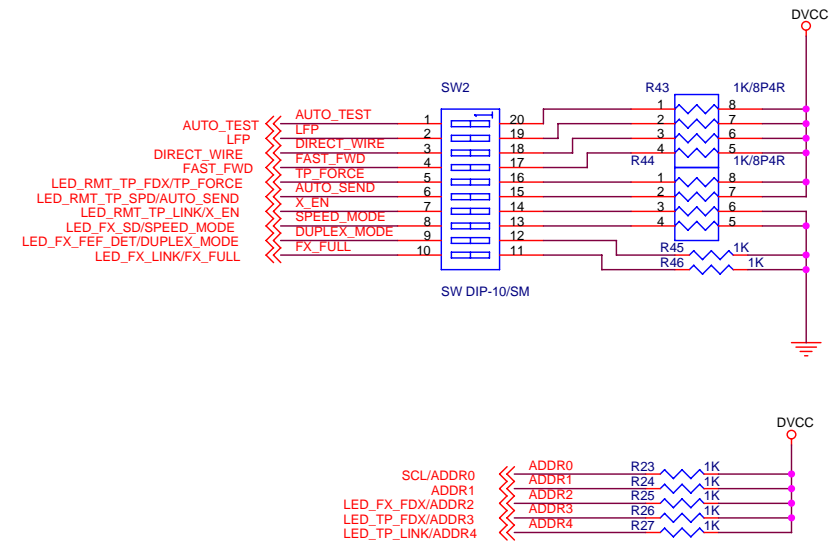
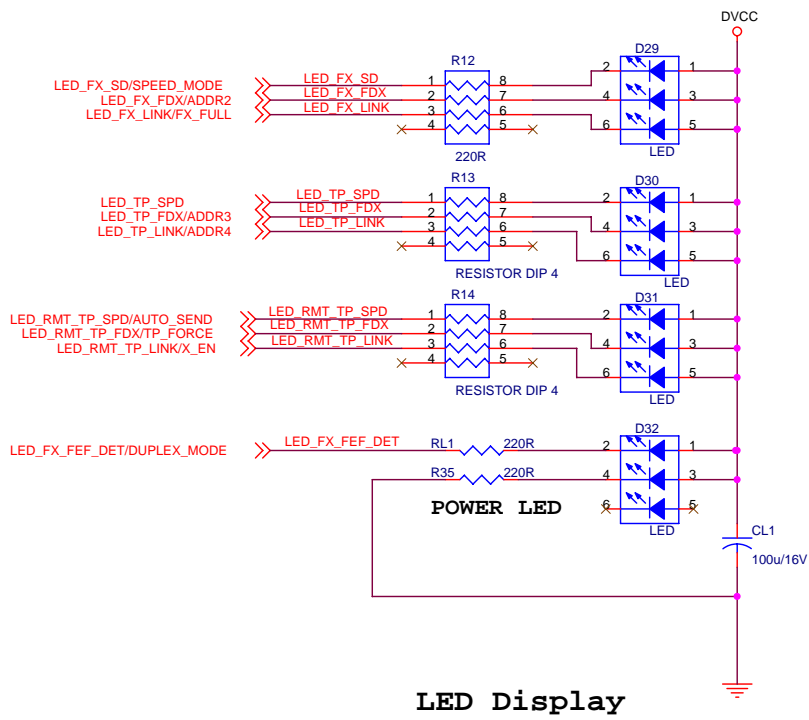
**RJ45**



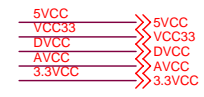
**TS6121CX**



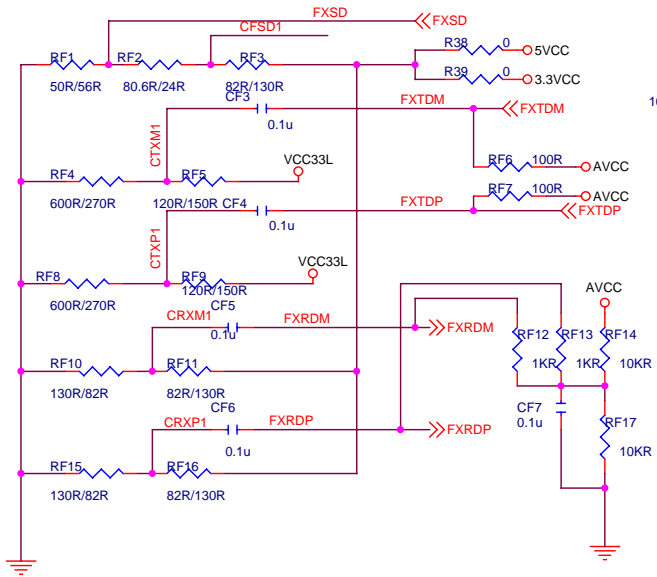
Title		
IP113M		
Size A	Document Number Transformer ; RJ45	Rev 2
Date:	Tuesday, March 27, 2007	Sheet 3 of 8



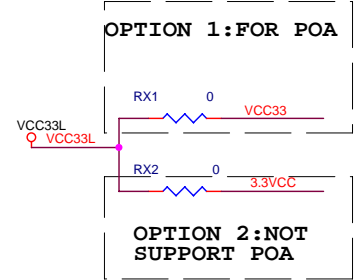
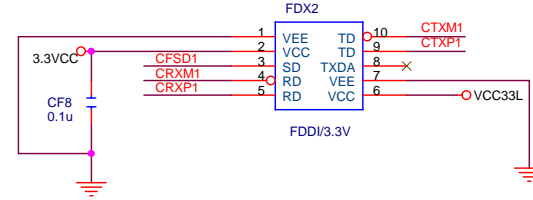
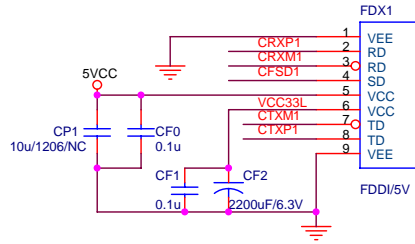
**FUNCTION SETTING (OPTION)**



<b>IC<sup>+</sup></b>		
<b>Title</b>		
<b>IP113M</b>		
<b>Size</b>	<b>Document Number</b>	<b>Rev</b>
B	<b>LED ; SEETING FUNCTION</b>	2
<b>Date:</b>	Tuesday, March 27, 2007	<b>Sheet</b> 4 <b>of</b> 8



NOTE: 5 V FIBER REGISTER / 3.3V FIBER REGISTER



<b>IC+</b>		
Title <b>IP113M</b>		
Size B	Document Number <b>FX_FIBER</b>	Rev 2
Date:	Tuesday, March 27, 2007	Sheet 5 of 8

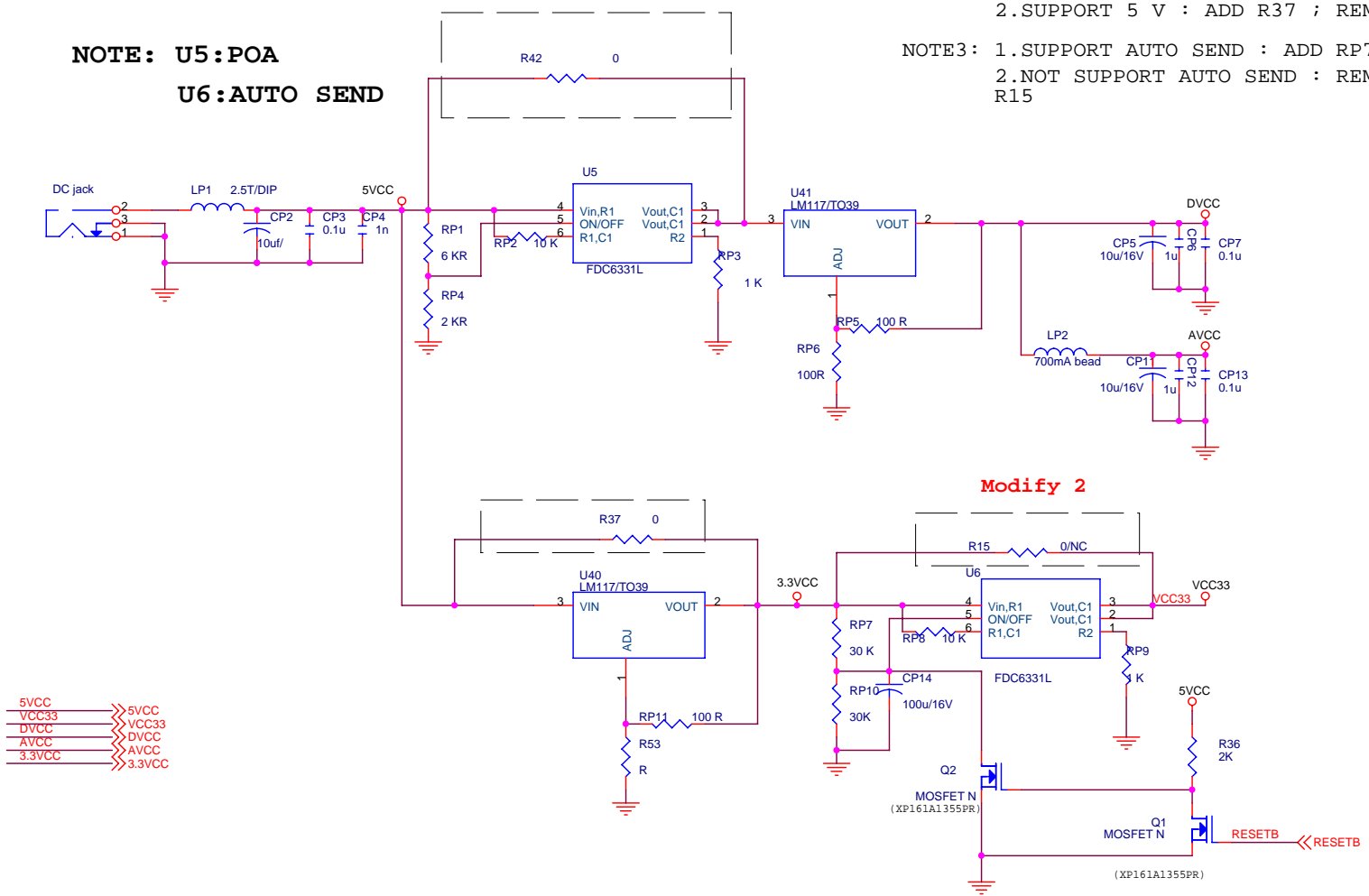
# Power for IP113M supporting power off alarm (POA) & auto send

NOTE1: 1.SUPPORT POA : ADD RP1,RP2,RP3,RP4,U5 ; REMOVE R42  
 2.NOT SUPPORT POA : REMOVE RP1,RP2,RP3,RP4,U5 ADD R42

NOTE2: 1.SUPPORT 3.3 V : ADD RP11,R53,U40 REMOVE R37  
 2.SUPPORT 5 V : ADD R37 ; REMOVE RP11 ,R53 ,U40

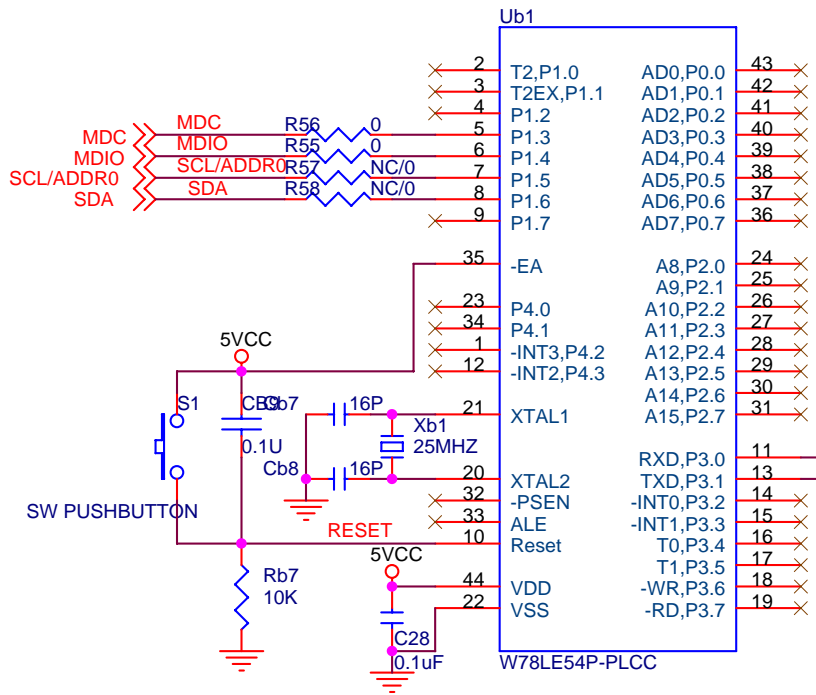
NOTE3: 1.SUPPORT AUTO SEND : ADD RP7,RP8,RP9,RP10,CP14,U6  
 2.NOT SUPPORT AUTO SEND : REMOVE RP7,RP8,RP9,RP10,CP14,U6 , ADD R15

**NOTE: U5:POA**  
**U6:AUTO SEND**

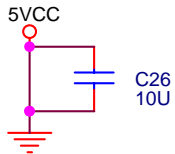
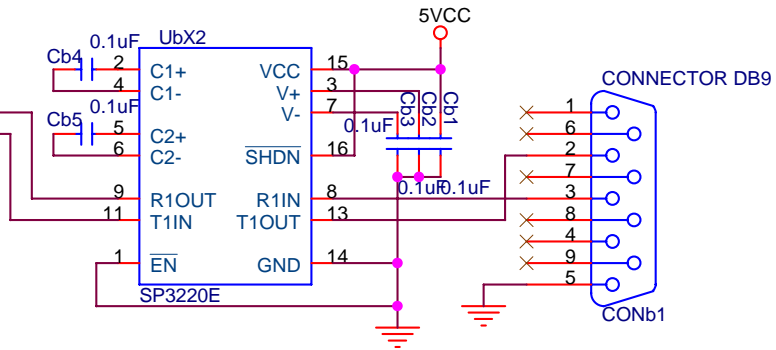


5VCC → 5VCC  
 VCC33 → VCC33  
 DVCC → DVCC  
 AVCC → AVCC  
 3.3VCC → 3.3VCC

<b>IC+</b>		
Title <b>IP113M</b>		
Size B	Document Number <b>POWER</b>	Rev 2
Date:	Tuesday, March 27, 2007	Sheet 6 of 8



## CONSOLE-PORT



Modify 3

<b>IC+</b>		
Title <b>IP113M</b>		
Size A	Document Number <b>8051</b>	Rev 2
Date:	Tuesday, March 27, 2007	Sheet 7 of 8

# IP113S Modify histroy

VERSION Item	PAGE	IP113S_R01.DSN APPLICATION CIRCUIT	IP113S_R02.DSN APPLICATION CIRCUIT
1	PAGE 2	U1 pin19	U1 pin19 connect DVCC
2	PAGE 6		Add R15
4	PAGE 7	OLD 8051 CIRCUIT	NEW 8051 CIRCUIT

		
Title <b>IP113M</b>		
Size A	Document Number NOTE	Rev 2
Date: Tuesday, March 27, 2007		
Sheet		8 of 8